



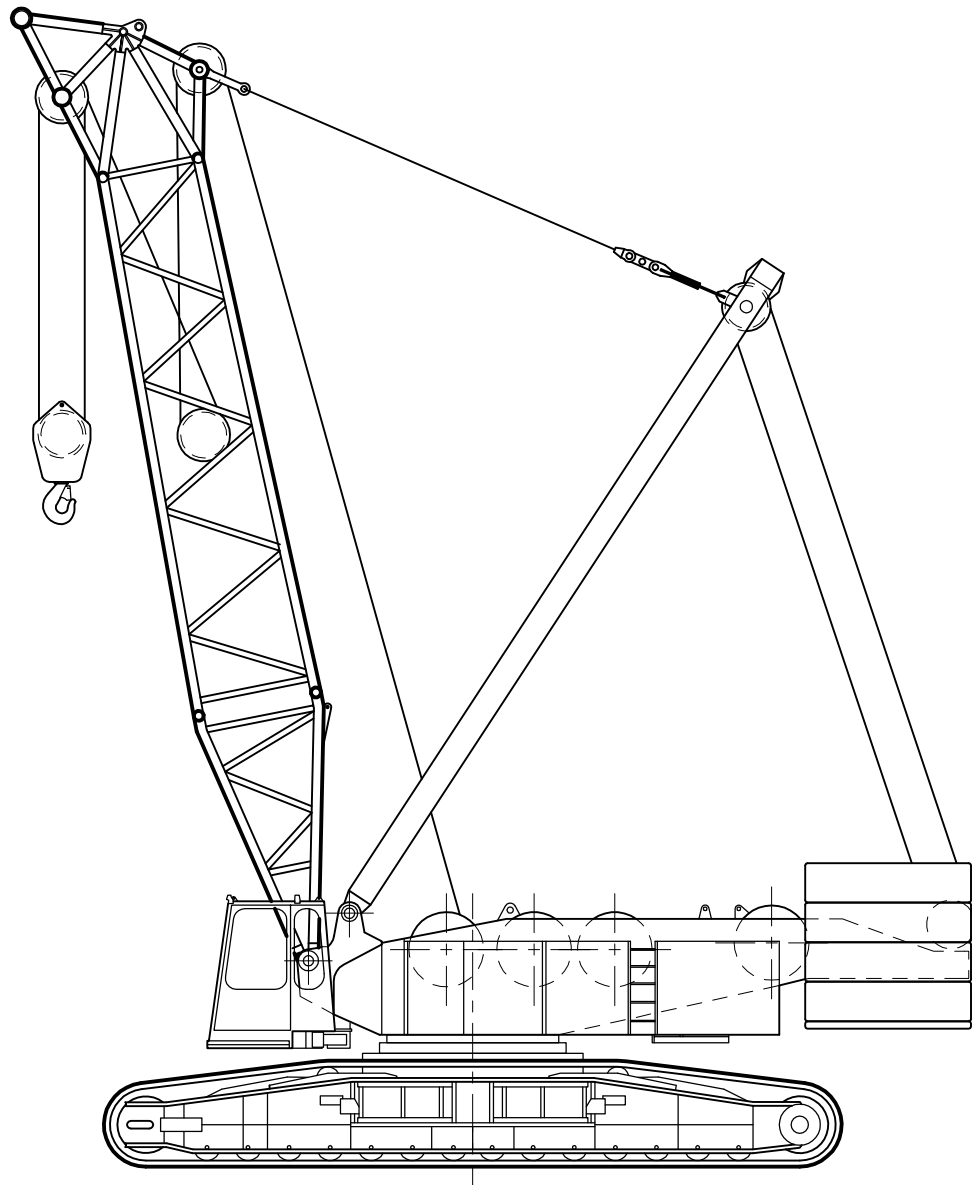
sarens n.v./s.a.

Autoweg 10
B-1861 Wolveterm, BELGIUM
Tel.: +32 (0)52.319.319
Fax.: +32 (0)52.319.329
E-mail: info@sarens.com
Internet: www.sarens.com

DEMAG CC 1100

250 TON

1/100



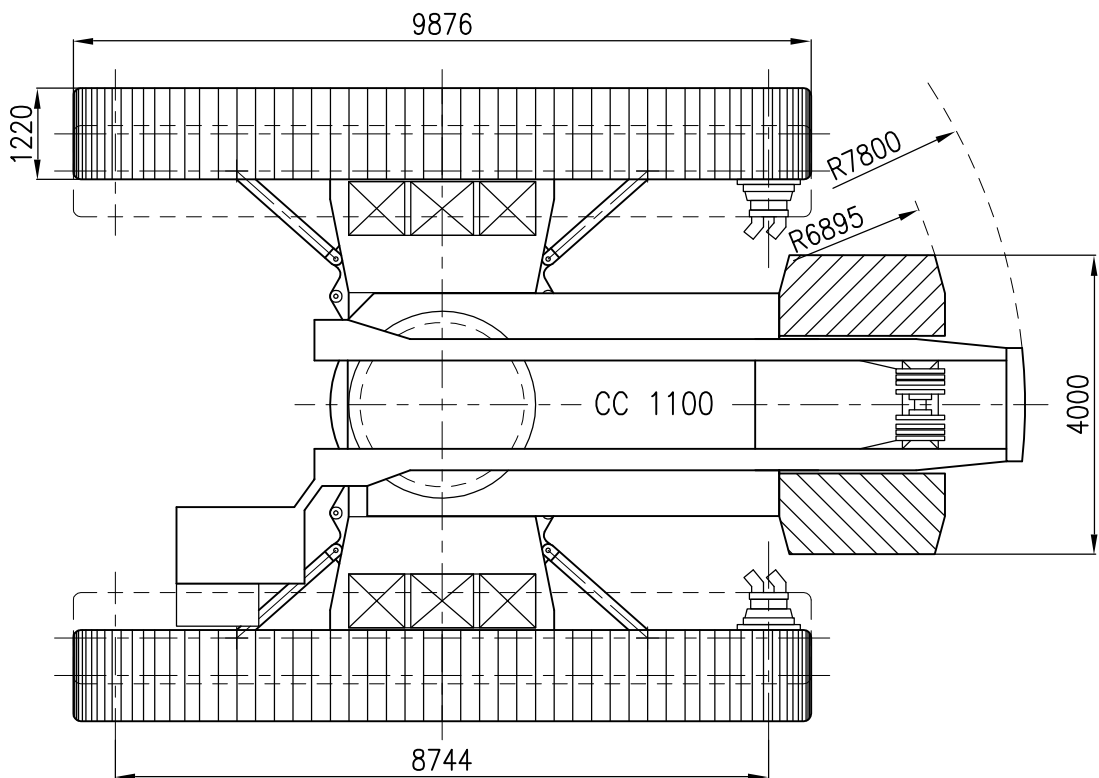
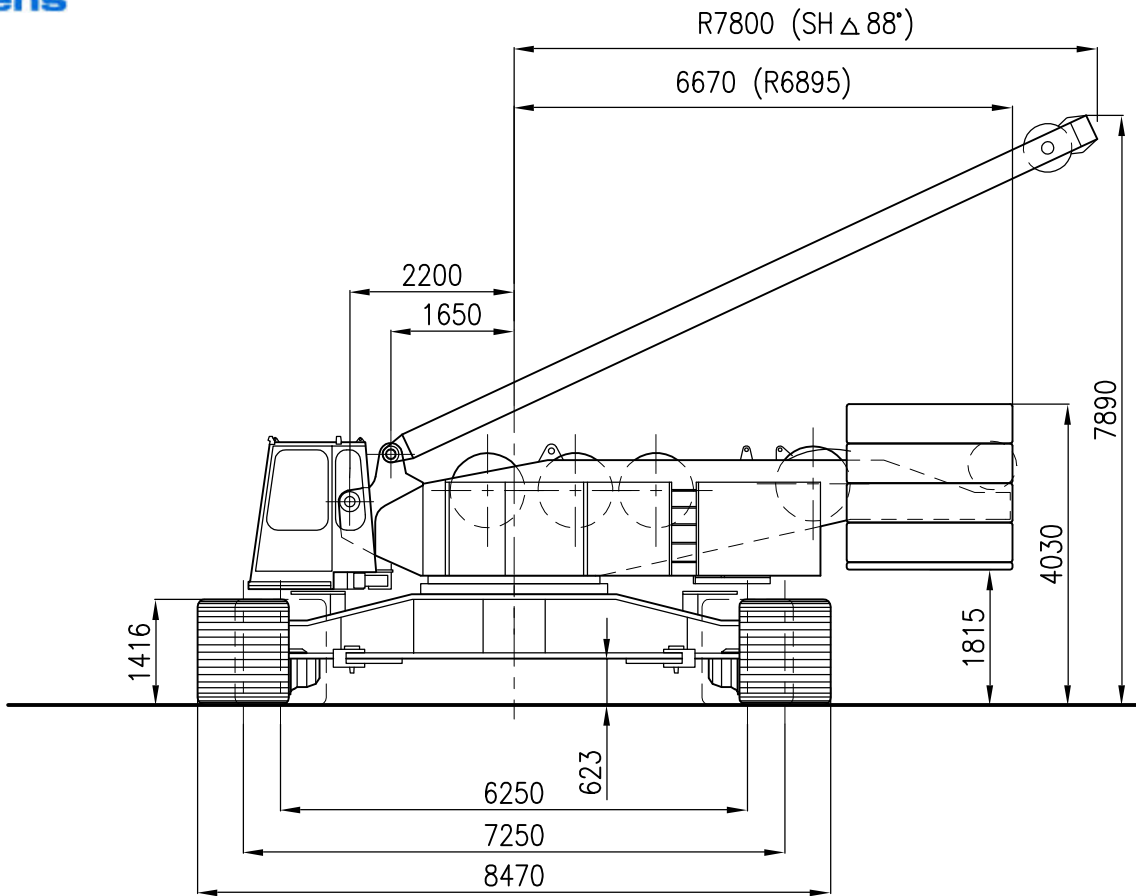


DEMAG CC 1100

250 TON

Dimensions
Dimensions

Abmessungen
Afmetingen
1/100





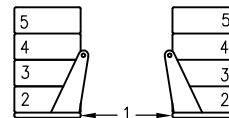
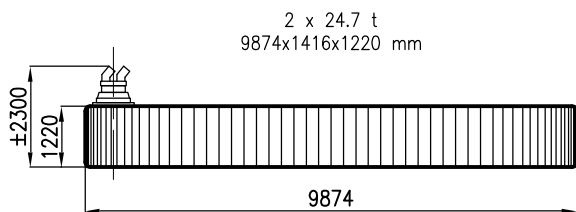
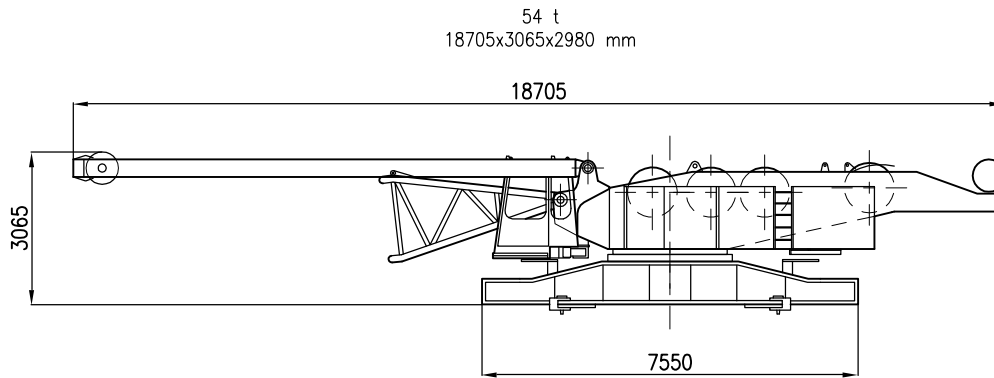
DEMAG CC 1100

250 TON

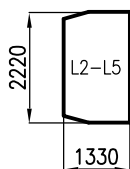
Weight
Poids

Gewicht
Gewicht
1/150

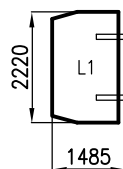
Superstructure with carbody Partie supérieure avec carter central Oberwagen mit Mittelstück Bovenwagen met centraal onderstelgedeelte	54 t
Crawler unit Bâti de chenille Raupen Rupsen	2 x 24.7 t
Counterweight Contrepoids Gegengewicht Tegengewicht	80 t



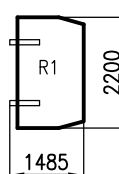
4 x 9,4 t
1330x2220x550 mm



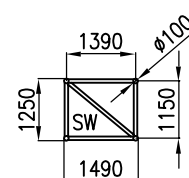
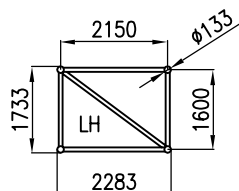
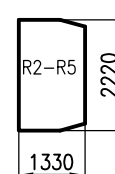
1 x 2,7 t
1485x2220x1350 mm



1 x 2,7 t
1485x2220x1350 mm



4 x 9,4 t
1330x2220x550 mm





DEMAG CC 1100

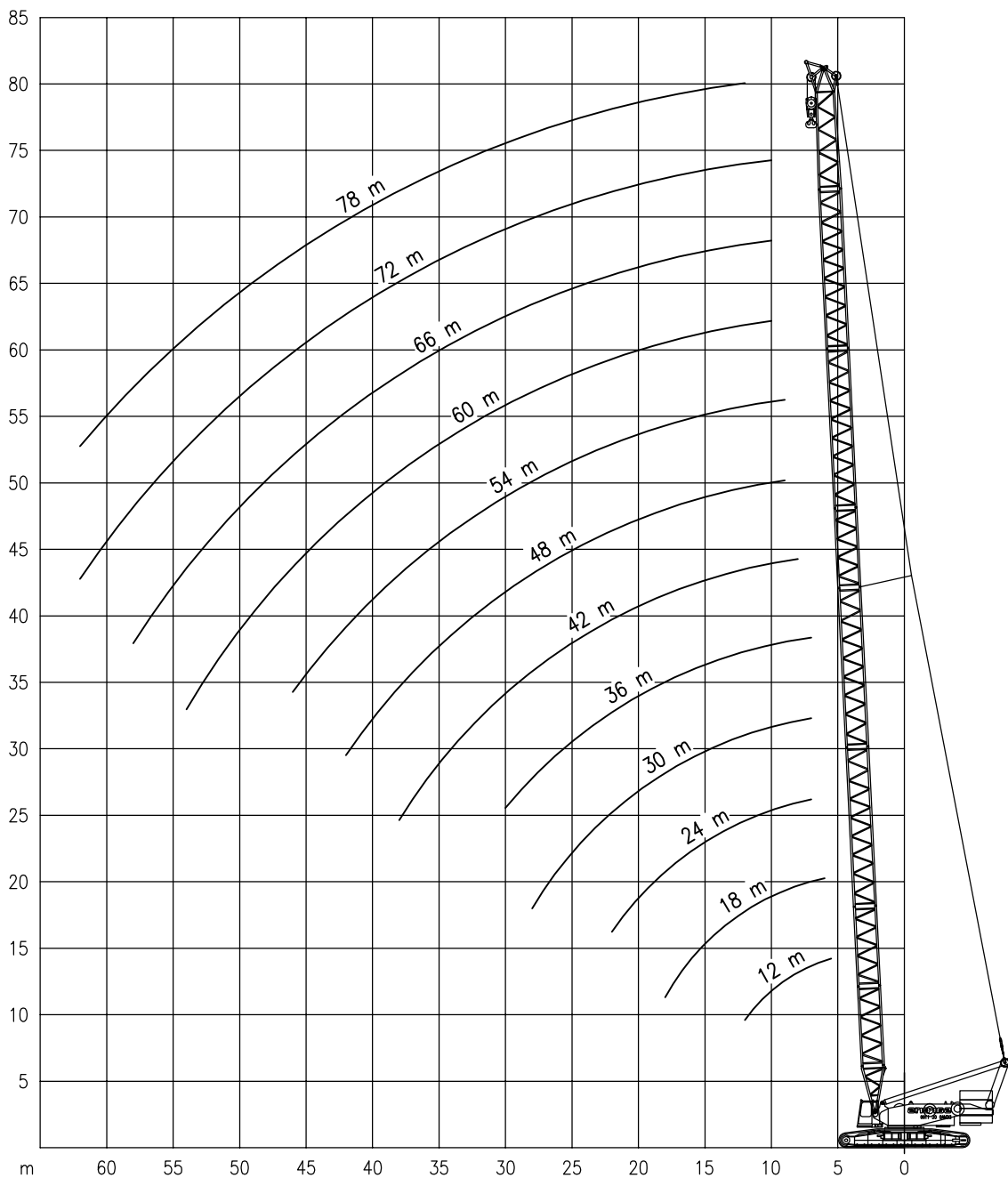
250 TON

Working ranges of main boom
Portées de la flèche principale

Arbeitsbereiche mit Hauptausleger
Werkbereich van de hoofdgiek

LH

1/500





DEMAG CC 1100

250 TON

Lifting capacities at main boom
Capacités à la flèche principale

Tragfähigkeiten am Hauptausleger
Capaciteiten aan de hoofdgiek

7.25 m

80 t

LH

360°

DIN 75 %

Radius Portée Ausladung Radius Main Boom – Flèche principale – Hauptausleger – Hoofdgiek

Radius	12 m	18 m	24 m	30 m	36 m	42 m	48 m	54 m	60 m	66 m	72 m	78 m
m	t	t	t	t	t	t	t	t	t	t	t	t
5.5	250**	–	–	–	–	–	–	–	–	–	–	–
6	200*	200*	–	–	–	–	–	–	–	–	–	–
7	190*	189*	188*	187*	163*	–	–	–	–	–	–	–
8	167*	166*	165*	164*	161*	144*	–	–	–	–	–	–
9	137*	136*	135*	133*	132*	130*	121	103	–	–	–	–
10	115	114	113	111	110	109	107	102	85	72	59	–
12	87	86	85	83	82	81	80	78	77	71	59	50
14	–	68	67	66	65	64	63	62	60	59	58	50
16	–	57	56	55	54	53	51	51	49	48	47	46
18	–	48	47	46	45	44	43	42	41	40	39	38
20	–	–	41	40	39	38	37	36	35	34	33	32
22	–	–	36	35	34	33	32	32	30	30	29	28
24	–	–	–	31	30	29	28	28	27	26	25	24
26	–	–	–	28	27	26	25	24	24	23	22	21
28	–	–	–	26	24	24	23	22	21	20	20	19
30	–	–	–	–	22	21	20	20	19	18	17	17
34	–	–	–	–	–	18	17	16	15	15	14	13
38	–	–	–	–	–	15	14	14	13	12	11	11
42	–	–	–	–	–	–	12	12	11	10	9.9	9.8
46	–	–	–	–	–	–	–	10	9.5	8.8	8.2	7.6
50	–	–	–	–	–	–	–	–	8	7.3	6.8	6.1
54	–	–	–	–	–	–	–	–	6.8	6	5.4	4.8
58	–	–	–	–	–	–	–	–	–	5.5	4.3	3.6
62	–	–	–	–	–	–	–	–	–	–	3.3	2.6

6.25 m

80 t

LH

360°

DIN 75 %

Radius Portée Ausladung Radius Main Boom – Flèche principale – Hauptausleger – Hoofdgiek

Radius	18 m	24 m	30 m	36 m	42 m	48 m	54 m	60 m	66 m	72 m
m	t	t	t	t	t	t	t	t	t	t
6	200*	–	–	–	–	–	–	–	–	–
7	182*	181*	181*	163	–	–	–	–	–	–
8	143*	143*	142*	142	141*	–	–	–	–	–
9	118	118	117	117	116	115	103	–	–	–
10	100	100	99	99	98	97	97	85	72	59
12	77	76	75	75	74	73	73	72	71	59
14	62	61	60	60	59	58	58	57	57	57
16	51	50	50	50	49	48	48	47	47	46
18	44	43	43	42	41	40	40	39	39	39
20	–	38	37	36	36	35	34	34	33	33
22	–	33	32	31	31	30	30	29	29	28
24	–	–	29	28	28	26	26	25	25	25
26	–	–	26	25	25	23	23	22	22	22
28	–	–	23	22	22	21	20	20	19	19
30	–	–	–	20	20	19	18	18	17	17
34	–	–	–	–	16	15	15	14	14	13
38	–	–	–	–	14	13	12	11	11	10
42	–	–	–	–	–	11	10	9.5	9	8
46	–	–	–	–	–	–	8.5	8	7	6.5
50	–	–	–	–	–	–	–	6.5	5.5	5
54	–	–	–	–	–	–	–	5	4.5	4
58	–	–	–	–	–	–	–	–	3.5	3
62	–	–	–	–	–	–	–	–	–	2

* : 220 tons hook block required / moufle 220 tonnes exigé / 220 tonnen Unterflasche erforderlich / 220 tons hakenblok noodzakelijk
 ** : 250 tons hook block required / moufle 250 tonnes exigé / 250 tonnen Unterflasche erforderlich / 250 tons hakenblok noodzakelijk



DEMAG CC 1100

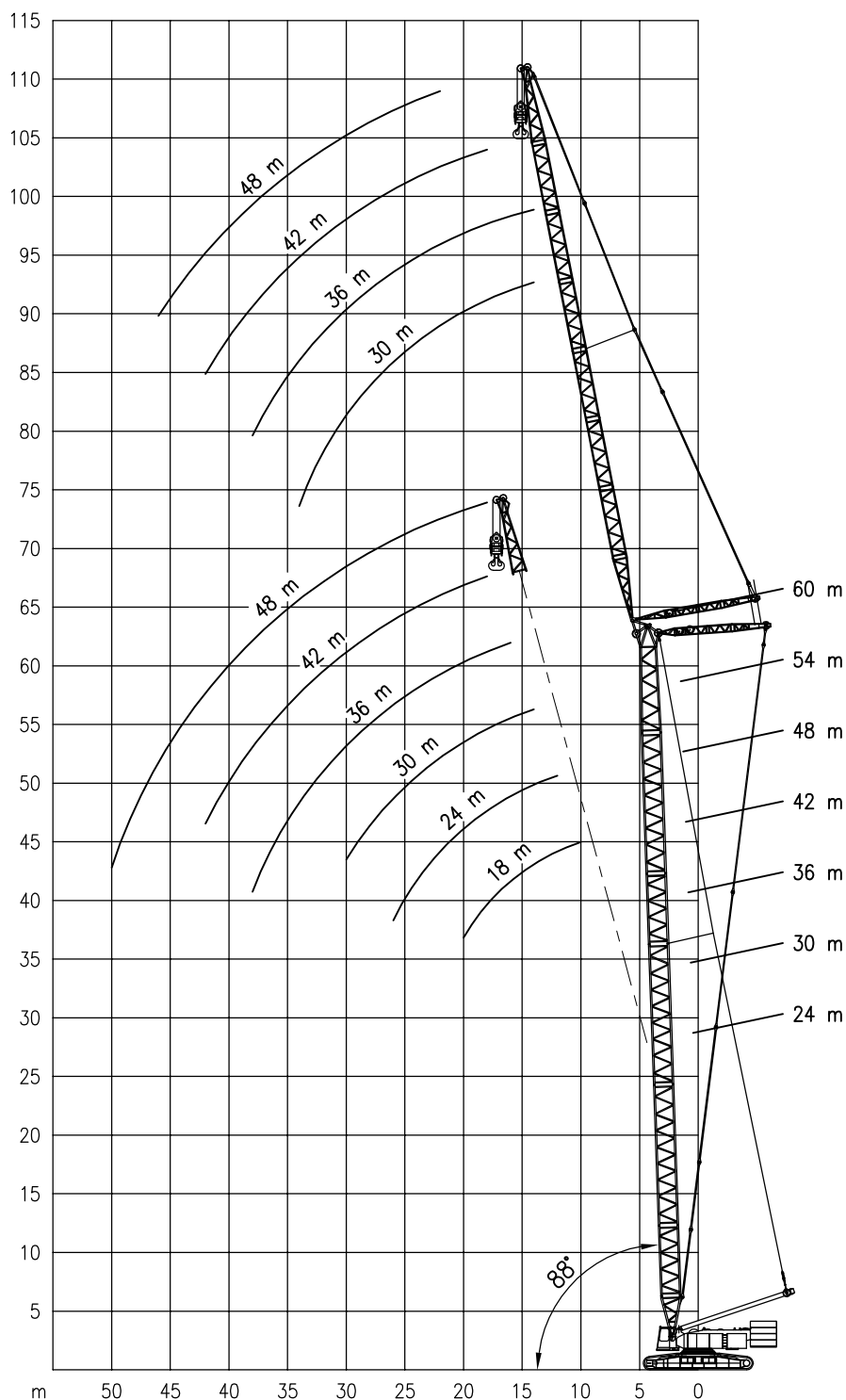
250 TON

Working ranges of luffing fly jib
Portées de la volée variable

Arbeitsbereiche mit wippbarer Hilfsausleger
Werkbereich van de beweegbare hulpgiëk

SW

1/600





DEMAG CC 1100

250 TON

Lifting capacities at luffing fly jib
Capacités à la volée variable

Tragfähigkeiten am wippbarer Hilfsausleger
Capaciteiten aan de beweegbare hulpgiëk

7.25 m 80 t SW-88° 360° DIN 75 %

Main boom Flèche principale Hauptausleger Hoofdpiëk	Radius Portée Auslad. Radius	Lifting fly jib – Flèche						Main boom Flèche principale Hauptausleger Hoofdpiëk	Radius Portée Auslad. Radius	Lifting fly jib – Flèche					
		Hilfsausleger – Beweegbare hulpgiëk								Hilfsausleger – beweegbare hulpgiëk					
		18m	24m	30m	36m	42m	48m			24m	30m	36m	42m	48m	
m	t	t	t	t	t	t	m	t	t	t	t	t			
24 m	10	75	–	–	–	–	–	42 m	14	59	48	–	–	–	
	12	68	62	–	–	–	–		16	56	47	40	32	–	
	14	63	58	54	–	–	–		18	50	46	40	32	–	
	16	59	54	50	45	–	–		20	44	43	40	32	24	
	18	52	51	47	43	37	30		22	39	38	38	31	24	
	20	45	45	44	41	36	29		24	35	34	34	30.5	24	
	22	–	39	39	39	35	29		26	31	31	31	30	24	
	24	–	35	35	35	33	28.5		28	29	28	28	27	24	
	26	–	32	32	31	31	28		30	–	26	25	25	23	
	28	–	–	29	28	28	27.4		34	–	–	22	21	20.6	
	30	–	–	26	26	26	25.1		38	–	–	19.1	18.7	17.8	
	34	–	–	–	22	22	21.3		42	–	–	–	16.4	15.5	
	38	–	–	–	19.7	19.2	18.4		46	–	–	–	–	13.5	
	42	–	–	–	–	16.9	16.1		50	–	–	–	–	12	
	46	–	–	–	–	–	14.3								
50	–	–	–	–	–	12.9									
30 m	10	73	–	–	–	–	48 m	14	53	–	–	–	–		
	12	69	62	–	–	–		16	50	43	35	–	–		
	14	64	58	55	–	–		18	47	41	35	29	–		
	16	60	55	51	46	–		20	43	39	35	29	23		
	18	51	51	48	44	37		–	22	38	37	33	29	23	
	20	45	44	44	42	36		28	24	34	34	31	28	23	
	22	–	39	39	39	36		28	26	31	31	29	26	23	
	24	–	35	35	34	34		28	28	28	28	27	25	22	
	26	–	32	31	31	31		28	30	–	25	25	23	21	
	28	–	–	28	28	28		27.2	34	–	22	21	20.5	19.5	
	30	–	–	26	26	25		24	38	–	–	18.9	18.3	17.2	
	34	–	–	–	22	22		21	42	–	–	–	16.2	15.2	
	38	–	–	–	19.5	19.1		18.2	46	–	–	–	–	13.2	
	42	–	–	–	–	16.7		15.9	50	–	–	–	–	11.8	
	46	–	–	–	–	–		14							
36 m	12	62	60	–	–	–	54 m	14	45	–	–	–	–		
	14	60	59	51	–	–		16	43	38	–	–	–		
	16	58	55	49	44	–		18	42	37	32	27	–		
	18	51	51	47	43	34		–	20	40	35	31	27	21	
	20	45	44	44	42	34		26	22	38.5	33	30	26	21	
	22	39	39	39	38	33		26	24	34.5	32	28	25	21	
	24	–	35	34	34	32		26	26	31.2	30.8	27	24	21	
	26	–	32	31	31	30		26	28	–	28	25	23	20.3	
	28	–	–	28	28	28		26	30	–	25	23.5	22	19	
	30	–	–	26	26	25		24.6	34	–	–	21	19.5	18	
	34	–	–	–	22	21		20.8	38	–	–	18.7	17.7	16.1	
	38	–	–	–	19.3	18.9		18	42	–	–	–	16.1	14.6	
	42	–	–	–	–	16.5		15.7	46	–	–	–	–	12.9	
	46	–	–	–	–	–		13.9	50	–	–	–	–	11.5	
	60 m	14	–	–	–	–		–	60 m	14	–	32	28	–	–
16		–	–	–	–	–	16	–		32	28	–	–		
18		–	–	–	–	–	18	–		32	28	24	–		
20		–	–	–	–	–	20	–		32	28	24	–		
22		–	–	–	–	–	22	–		30.3	27	24	19		
24		–	–	–	–	–	24	–		28.8	25.7	23	19		
26		–	–	–	–	–	26	–		27.5	24.6	22	19		
28		–	–	–	–	–	28	–		25.6	23.2	21	18.6		
30		–	–	–	–	–	30	–		24	22	20	17.8		
34		–	–	–	–	–	34	–		20.5	20	18.5	16.4		
38		–	–	–	–	–	38	–		–	18.5	17.1	15.1		
42		–	–	–	–	–	42	–		–	–	15.9	14		
46		–	–	–	–	–	46	–		–	–	–	12.5		



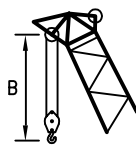
DEMAG CC 1100

250 TON

Working speeds
Vitesses de travail

Arbeitsgeschwindigkeiten
Werksnelheden

Mechanisms Mécanismes Antriebe Aandrijvingen	Speeds Vitesses Geschwindigkeiten Snelheden	Rope diameter Diamètre du câble Seildurchmesser Kabeldiameter	Single line pull Effort sur brin simple Zulässiger Seilzug je Strang Toegelaten trekkkracht per part	Length of ropes Longueur des câbles Länge der Seile Kabellengtes
Main hoist Levage sur flèche Hubwerk 1 Hijslier 1	0 – 87 m/min	26 mm	100 kN	600 m
Auxiliary hoist Levage sur fléchette Hubwerk 2 Hijslier 2	0 – 87 m/min	26 mm	100 kN	600 m
Boom hoist Relevage de flèche Einziehwerk Toplier hoofdmast	2 x 25 m/min	26 mm		2 x 200 m
Luffing hoist Relevage de fléchette Wippwerk Toplier wipper	0 – 43 m/min	26 mm		600 m
Slewing gear Orientation Drehwerk Zwenkwerk	0 – 1,6 RPM 0 – 1,6 tr./mn. 0 – 1,6 U/min 0 – 1,6 tpm			
Travel speed low / high Translation petite / grande vitesse Fahrgeschwindigkeit 1.Gang / 2. Gang Rijwerk laag / hoog	0 – 0,7 / 0 – 1,4 km/h			



Hook block/Crane hook
Crochet mouflé/Crochet simple

Unterflasche/Hakengehänge
Kraanblok/Kraanhaak

Capacity Capacité Tragfähigkeit Capaciteit	Number of sheaves Nombre de poulies Anzahl der Rollen Aantal schijven	Number of lines Nombre de brins Strangzahl Aantal parten	Weight Poids Gewicht Gewicht	"B"
SWL 250 t	13	26	4150 kg	3,50 m
SWL 220 t	11	22	2600 kg	3,00 m
SWL 125 t	6	13	3040 kg	2,50 m
SWL 70 t	3	7	2020 kg	2,50 m
SWL 40 t	3	4	1760 kg	2,00 m
SWL 10 t	–	1	540 kg	1,50 m