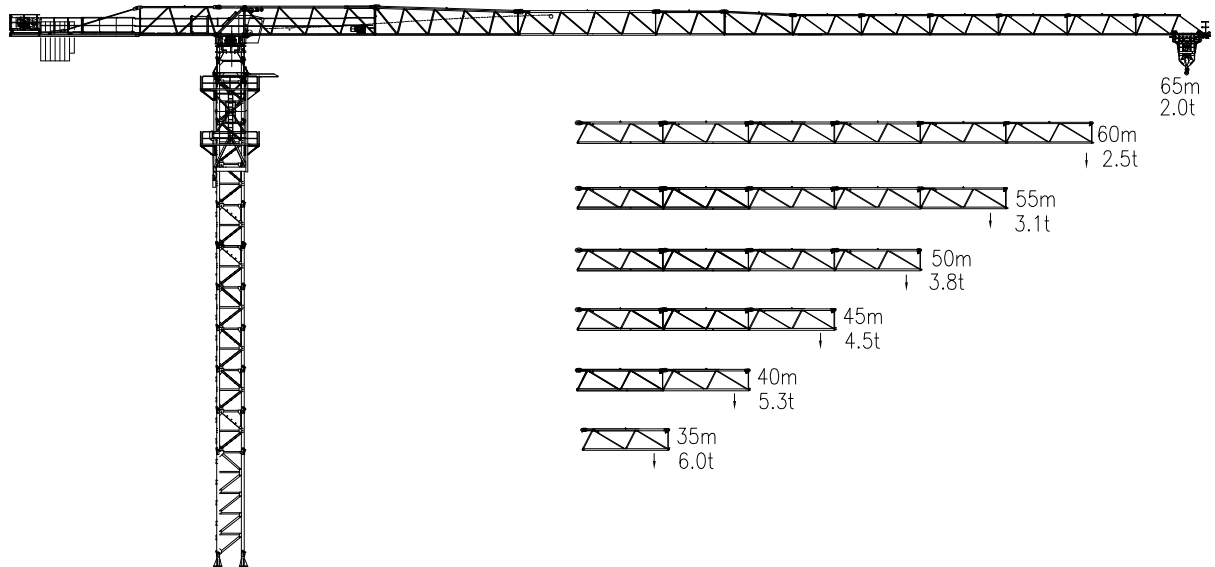


2.1.2 Jib lengths, Load diagrams Speeds



Jib m	rope	Max Load		Mxt												
		t	m	10	15	18	20	25	30	35	40	45	50	55	60	65
65	6	26.8						6.00	5.16	4.31	3.68	3.19	2.80	2.49	2.22	2.00
	12	13.36	12.00	11.16	9.04	8.01	6.17	4.96	4.11	3.48	3.48	2.60	2.29	2.02	1.80	
60	6	29.2						6.00	5.68	4.76	4.07	3.55	3.13	2.78	2.50	
	12	15.04		12.00	9.81	8.70	6.73	5.44	4.54	3.86	3.34	2.92	2.58	2.30		
55	6	30.3						6.00	5.26	4.51	3.93	3.47	3.10			
	12	16.2		12.00	10.82	9.61	7.54	6.04	5.04	4.30	3.73	3.27	2.90			
50	6	35.2						6.00	5.73	4.92	4.30	3.80				
	12	17.7		12.00	11.77	10.45	8.12	6.59	5.51	4.71	4.09	3.60				
45	6	35.3						6.00	5.99	5.15	4.50					
	12	18.5			12.00	11.25	8.50	6.91	5.78	4.95	4.30					
40	6	35.6						6.00	5.99	5.15						
	12	18.5			12.00	10.93	8.50	6.91	5.78	4.95						
35	6	36.0							6.00							
	12	19.0			12.00	11.23	8.81	7.16	6.00							

Mechanisms specification			Two fall		Four fall		Drum capacity	Motor power
Hoist winch	70LVF30	t	3	6	6	12		
		m/min	0-40	0-80	0-40	0-20	525m	55KW
Trolley winch	PX120	m/min	0-58				60m	120Nm
Slewing mech.	RCV145	r/min	0-0.8					145NmX2
Power Supply					380v 50Hz			
Necessary electric power					101KVA			