

THE ESSENCE OF SANY PRODUCT LIES IN ITS HIGH RELIABILITY

Offering you exceptionally reliable lifting capacity



Truck Crane

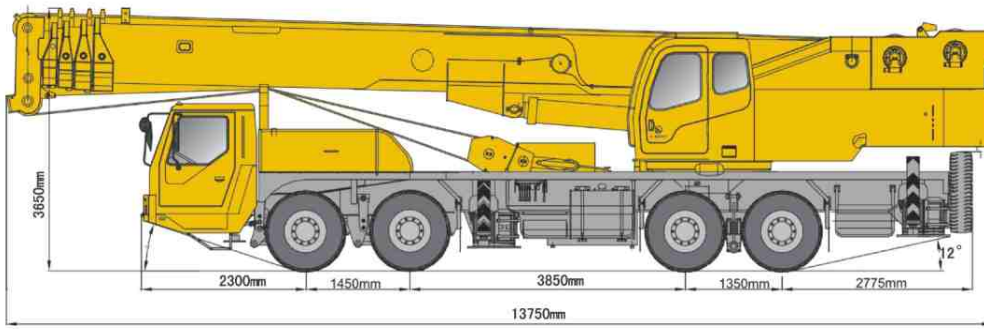
QY50C



SANY

QUALITY CHANGES THE WORLD

- New industrial design: The “Red Star” series designed by top design agency in Europe are provided with new appearance and strong associative perception ; the advanced mould pressing and electrophoresis process greatly improve the elaboration of product manufacturing;
- Powerful lifting capacity: The hoisting boom is provided with high-strength structural steel and great circle hexagonal section, with good self-centered performance and strong lifting capacity. The maximum lifting moment is 1, 786KN.m, and the largest span of landing leg is 7.2m with good stability;
- Overlong main boom leading the industry: The length of full stretching main boom is 42.5m and the maximum lifting height is 58.8m;
- High-efficiency working performance: The main and auxiliary hoists adopt 2-gear motor with fast lifting speed in light load and works stably with heavy load; the maximum speed of single rope is 130m/min with high working efficiency; the engine of Euro-iii standard can operate at low rotary speed with low oil consumption, thus archiving effect of energy conservation;
- Best-value ECC system: The unique ECC control management system helps customers master the location and using status of the vehicle at any time through the GPS, thus realizing the real-time management of vehicle across the regions and the fault diagnosis;
- Outstanding running performance: Engine with strong power and high-reliability chassis system make the SANY truck cranes provided with outstanding running performance;
- Strong service guarantee: Relying on powerful service management platform of SANY Group and 6S service offices throughout China as well as adhering to the service concept of “surpassing the industry standard exceeding customers' expectations” , we strive to provide customers with the highest-quality service.



Main Technical Specifications of STC50C Truck Crane

Dimensions		mm	Value	Weight	Overall weight		kg	Value
Overall length		mm	13750		Load	Wheel track load of the 1 st axle	kg	42000
Overall width		mm	2750	Wheel track load 2 nd axle and 3 rd axle		kg	16000	
Overall height		mm	3650	Max. Power of engine		Dongfeng CUMMINS ISLe310 30	Kw/rpm	228/2200
Wheel base	The 1 st and 2 nd	mm	1450		LNTS WP10.336	Kw/rpm	247/2200	
	The 3 rd and 4 th	mm	1350		Sdec SC9DK320Q3	Kw/rpm	235/2200	
Wheel track	The 1 st and 2 nd axles	mm	2300	Max.output torque of engine	Dongfeng CUMMINS ISLe310 30	N.m/rpm	1200/1200~1400	
	The 3 rd and 4 th axles	mm	2055		LNTS WP10.336	N.m/rpm	1250/1000~1500	
	Sdec SC9DK320Q3	N.m/rpm	1250/1400		Main performance	Max.rated lifting capacity	t	55
Max.travel speed		km/h	76	Min.rated radius		m	3	
Turning radius	Minimum turning radius	m	11	Tail swing radius	m	3900		
	Min.turning radius of boom head	m	14.5	Max.lifting torque	Primary	KN.m	1788.5	
Travel	Min.ground clearance	mm	342		Fully extended	KN.m	840.8	
	Approach angle	°	≥18	Fully extended+jib	KN.m	318		
Departure angle	°	≥12	Spans legs (horizontal×vertical)	M	7.2×6.0			
Brake distance (speed of 30km/h)	m	≤10		Lifting height	Primary	M	12	
Max.ground clearance	%	35	Fully extended		M	42.8		
Oil consumption per 100 kilometers	L	≤45	Fully extended+jib	M	58.8			
Working speed	Max. Single line speed of main winch(no-load)	m/min	130	Length of hoisting boom	Primary	M	11.5	
	Max. Single line speed of auxiliary winch(no-load)	m/min	130		Fully extended	M	42.5	
	Telescoping time of boom	s	120/100	Fully extended+jib	M	58.5		
	Elevation time of boom	s	80/60	Offset angle of jib	°	0、15、30		
	Swing speed	r/min	0~2.4					
Time of extending/retracting outrigger (horizontal)	s	38/20						
Time of extending/retracting outrigger (vertical)	s	35/15						

Rated lifting capacity of jib

Working range m	Outrigger in full stretching					
	42.5+9.2m			42.5+16m		
	0°	15°	30°	0°	15°	30°
78°	3500	2400	2000	2400	1450	1000
77°	3200	2300	1900	2400	1400	1000
75°	3000	2200	1800	2300	1300	950
73°	2700	2000	1700	2000	1200	850
71°	2500	1800	1600	1800	1100	850
68°	2200	1700	1400	1500	1000	800
66°	2000	1500	1300	1300	950	760
63°	1800	1400	1100	1100	850	720
61°	1500	1200	950	950	750	650
58°	1100	950	750	650	600	550
56°	700	650	550	500		

Min. elevation angle of main cargo boom 55°

Rated lifting capacity of main Boom

Working range(m)	Rear and side operation when outriggers are fully extended												
	11.5m	15.4m	19.25m	19.25m	27.0m	27.0m	34.75m	34.75m	38.62m	38.62m	42.5m		
3.0	55000	40000	32000	21500									
3.5	50500	40000	32000	21500									
4.0	42800	40000	32000	21500									
4.5	40000	36000	31000	21500	21000	15000							
5.0	36500	33200	29000	20000	21000	15000							
5.5	32000	30000	27500	19000	21000	14500							
6.0	27700	27500	25700	18100	21000	13700	14000	9000					
6.5	25000	25500	23900	17500	19500	12800	14000	9000	11500				
7.0	22500	23200	21500	17000	18000	12100	14000	9000	11500	9000	9000		
7.5	21400	21200	18600	16200	16800	11500	13500	8500	11500	9000	9000		
8.0	19000	19500	16800	15600	15800	11000	12700	8500	11000	9000	9000		
9.0	15300	15000	13500	13800	14000	10000	11700	7800	10500	8500	8500		
10.0		11700	10300	12000	12000	9000	10700	7100	10000	8000	8500		
11.0		9500	8700	10600	9900	8200	8900	6400	9000	7500	7800		
12.0		7700	7200	8700	8300	7500	8300	5800	8000	7000	7000		
14.0			4900	6400	5900	6100	6200	5000	6300	5900	6000		
16.0			3400	4600	4300	5000	4700	4400	4900	5000	5200		
18.0					3100	4100	3600	3800	3800	4000	4200		
20.0						2200	3000	2800	3200	2900	3500	3100	
22.0						1600	2300	1900	2700	2200	2800	2500	
24.0							1100	1800	1500	2400	1700	2100	1800
26.0									1000	1900	1200	1650	1350
28.0									700	1500	850	1300	950
30.0									400	1000	500	900	700
32.0										800		600	400
34.0												350	

Telescoping condition (%)

Telescoping Mode	I, II	I	I	II	I	II	I	II	I	II	I, II
the 2nd boom	0	50	100	0	100	0	100	0	100	50	100
the 3rd boom	0	0	0	33	33	66	66	100	83.3	100	100
the 4th boom	0	0	0	33	33	66	66	100	83.3	100	100
the 5th boom	0	0	0	33	33	66	66	100	83.3	100	100
Multiplying power of wire cable	12	10	8	8	6	6	4	4	3	3	3

SANY HEAVY INDUSTRY CO., LTD.

Sany Industry Town, Economic and Technological Development Zone, Changsha, Hunan, China, 410100
 Website: <http://www.sany.com.cn>
 Service Hotline: 0086-731-4031000
 E-mail: sany-service@sany.com.cn